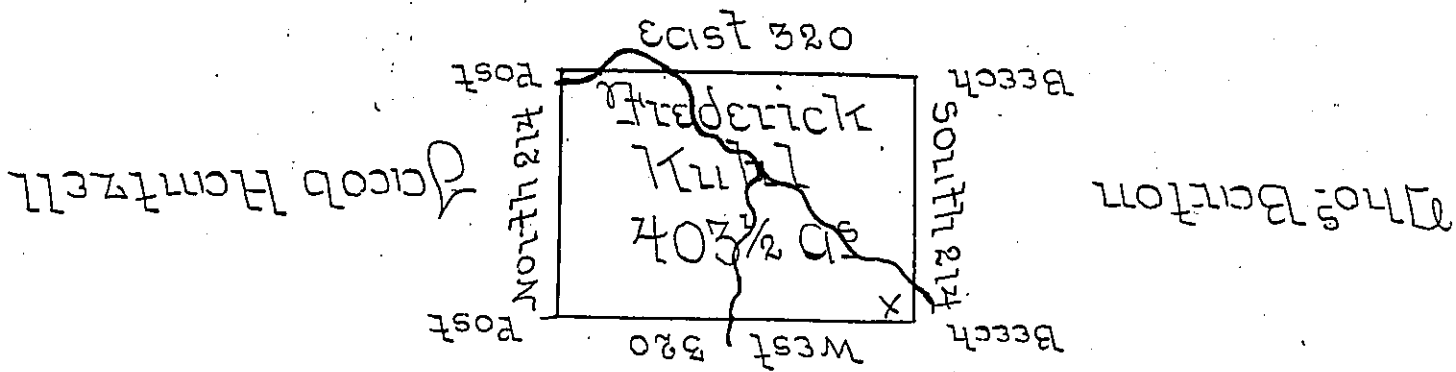


Henry Bachson



Wm Rlish

Situate on the Waters of Lake Erie in Allegheny
 County District No. 1. Surveyed 21 June 1794 to
 Frederick Kuhl on his Warrant dated 13 April
 1792 Containing four hundred three Acres and
 half & allow^{ce}

Thos Rees U.S.

Donl Brodhead Esq
 Surveyor

IN TESTIMONY that the above is a copy of the original remaining on file in
 the Department of Internal Affairs of Pennsylvania, made
 conformably to an Act of Assembly approved the 16th day of
 February, 1833, I have hereunto set my Hand and caused
 the Seal of said Department to be affixed at Harrisburg,
 this eight day of August 1905.

George P. Brown
 Secretary of Internal Affairs.